



pelsis

*PRECISE.
POWERFUL.
DEPENDABLE.
WORLD-CLASS
EQUIPMENT.*

A FAMILY OF BRANDS WITH ONE SHARED PURPOSE

Our customers are on the front lines taking on pests, germs and other challenges that threaten peace of mind. That's why our products can't afford to fail. It's why we obsess over every detail and innovate with precise intention. Everything we do is to empower our customers with the best professional equipment in the world so they can get the job done to the highest potential.

WE ARE pelsis

To find out more about the Pelsis Group and our brands, visit pelsis.com

B&G

CURTIS DYNA-FOG[®] Ltd.

SYNERGETIC[®]

 **EDIALUX**
PROFESSIONAL PRODUCTS

NETWORK

P+L Systems[®]
Washroom

SILVANDERSSON 


AGRISENSE

TAKING CONTROL OF VECTORS IS NO SMALL TASK.

With the constant threat of vector-transmitted disease around the world, it's essential to stay ready with dependable equipment. With our pro-grade line of powerful and precise equipment on your side, you can stay ahead of rodents, birds, mosquitos, vectors and the diseases they spread with confidence. Explore our complete collection of premier foggers, sprayers and bait stations to find the right solutions for your challenges.

B&G

B&G designs and manufactures equipment based on in-depth knowledge of the pest control industry worldwide. The world-famous B&G tank sprayers have the highest quality stainless steel combined with special-grade brass, and chemical-resistant gaskets and hoses to provide durable and dependable service. They are the first choice of professionals throughout the pest control industry, with models to suit every application need.

CURTIS DYNA-FOG[®] Ltd.

Known around the world for best-in-class disinfection and flying insect control equipment, Curtis Dyna-Fog continues to raise the bar. Their versatile catalog of products also features heavy-duty commercial foggers for large spaces, bird repelling and stored crops. Dyna-Fog equipment is trusted in nearly every corner of the world, with endless versatility, dependable quality and masterful engineering.

CONTENTS.

08**SPRAYERS**

- 10** Primeline Sprayers
- 11** SRG Perimeter Spray Gun
- 12** Preassurizing Tank Top (PTT)
- 12** Green Sprayer
- 13** Portable Aerosol System (PAS)
- 14** Sprayer Parts
- 16** Sprayer Accessories

18**FOGGERS**

- 20** Hand-Carry ULV Foggers
 - 20 Hurricane ES
 - 21 Hurricane Ultra II
 - 22 Flex-A-Lite 2600
 - 23 Ultra-Lite 2400
 - 23 My-Ti-Lite 2300
 - 24 Cyclone Ultra
 - 25 Tornado & Tornado Flex
- 26** Backpack ULV Foggers
 - 26 Twister XL-3
 - 27 Versa-Fogger
- 28** Truck-Mount ULV Foggers
 - 28 Dyna-Jet L-30
 - 30 Mini-Lite
 - 31 ATV-1 ULV Fogger
 - 31 Mini-Pro 8HP
 - 32 Typhoon 1
 - 33 Typhoon 2
 - 34 Maxi-Pro 2
 - 35 Maxi-Pro 4
 - 36 Dyna-Fog Model 1200
- 37** Thermal Foggers
 - 37 Golden Eagle
 - 38 Superhawk II
 - 39 Blackhawk
 - 40 Mister III
 - 41 Trailblazer

42**DUSTERS**

- 43** Bulb Duster

44**RODENT CONTROL**

- 46** Fast-Catch
- 48** Standard Rodent Station
- 48** Delux Rodent Station
- 49** Mouse Station
- 50** SX One Rat Box
- 51** Eco Guard

SPRAYERS

PRECISE. POWERFUL. PROVEN.

Born from a need for better equipment, B&G sprayers deliver the highest performance in the professional vector control industry. Trusted by pros around the world, our equipment is crafted to be dependable, easy to repair and versatile for any challenge on the job. Choose from our complete line to add the most reliable sprayers and accessories available to your operation.



PRIMELINE SPRAYERS

ICONIC FOR A REASON.

The B&G Primeline is designed for effective and efficient control of species that carry and spread disease vectors. Designed for years of dependable service, this iconic sprayer has the highest quality stainless steel combined with special-grade brass and chemical-resistant gaskets and hoses to take down any challenge, year after year. They are the first choice of professionals throughout the mosquito and vector control industries, with models to suit every application need.

FEATURES

- 1/2-, 2-, 3-gallon and 5-liter capacity
- 9 in, 18 in and 24 in extensions



PRIMELINE SPRAYERS

TANK CAPACITY	EXTENSION	MODEL #	ORDER #
2 Gallon	18"	N224-CC	11004300
1 Gallon	18" without C+C	N124-S-18	11003700
2 Gallon	18" without C+C	N224-S	11004200
2 Gallon	24"	N224-CC-24	11004375
1 Gallon	9" extension	N-124-CC Sprayer	11003900

XR VALVE

TANK CAPACITY	EXTENSION	MODEL #	ORDER #
1/2 Gallon		N54-CC	11001195
1/2 Gallon	without C+C	N54-S	11001100
1 Gallon	9"	N104-CC	11001450
1 Gallon	9" without C+C	N104-S	11001400
1 Gallon	9" with 8004 Fan Tip	N100-S	11001200
1 Gallon	18"	N104-CC-18	11001460
2 Gallon	18"	N204-CC	11001705
1 Gallon	18" without C+C	N104-S-18	11001425
2 Gallon	18" without C+C	N204-S	11001700
1 Gallon	18" with 8004 Fan Tip	N100-S-18	11001203
2 Gallon	18" with 8004 Fan Tip	N200-S	11001600
3 Gallon	18" with 8004 Fan Tip	N300-S	11001800

SRG PERIMETER SPRAY GUN

Made from durable brass and stainless steel, the SRG Perimeter Spray Gun is designed to deliver a wide angle or straight stream of liquid at 40 to 400 PSI. Ideal for outdoor perimeter treatments and soil injection around foundation walls, this spray gun also works great for treating shrubs and trees. The drip-free shut-off feature saves on product costs and ensures precision.

FEATURES

- Adjusts from cone spray to straight stream
- Stainless steel and brass construction with interchangeable nozzles
- Converts to a termite tool
- SRG-6 flow rate - 1.1 gal per min
- SRG-12 flow rate - 3.9 gal per min



SRG PERIMETER SPRAY GUN

ITEM #	DESCRIPTION	MODEL #	ORDER #
1	SRG Perimeter Spray Gun	SRG-6	22067701
2	SRG Perimeter Spray Gun	SRG-12	22067897

PRESSURIZING TANK TOP (PTT) UPGRADE TO UNSTOPPABLE.

B&G's Pressurizing Tank Top replaces the traditional pump mechanism used in stainless steel sprayers, eliminating the need to stop and pump during a service call. The PTT maintains optimal pressure in the sprayer from the time it is filled to when it is empty. Save time, eliminate unnecessary labor and improve efficiency with every customer served.

FEATURES

- Attaches to top of B&G stainless steel sprayers
- Maintains 30 psi in the tank
- Provides consistent flow of formulation, ensuring a uniform spray pattern
- Long-lasting battery provides up to 4 hours of charge



PRESSURIZING TANK TOP

ITEM #	DESCRIPTION	MODEL #	ORDER #
1	Pressurizing Tank Top	-	22046000

GREEN SPRAYER

The Green Sprayer is intended to be used with natural products, most common insecticides and non-repellent type products. Simple to use and eco-conscious, this sprayer makes it easy for technicians in the field to identify its contents while cultivating a green image for your business.

FEATURES

- Available with 9 in or 18 in extensions
- Chemical-resistant hose
- B&G 4-way tip



GREEN SPRAYER

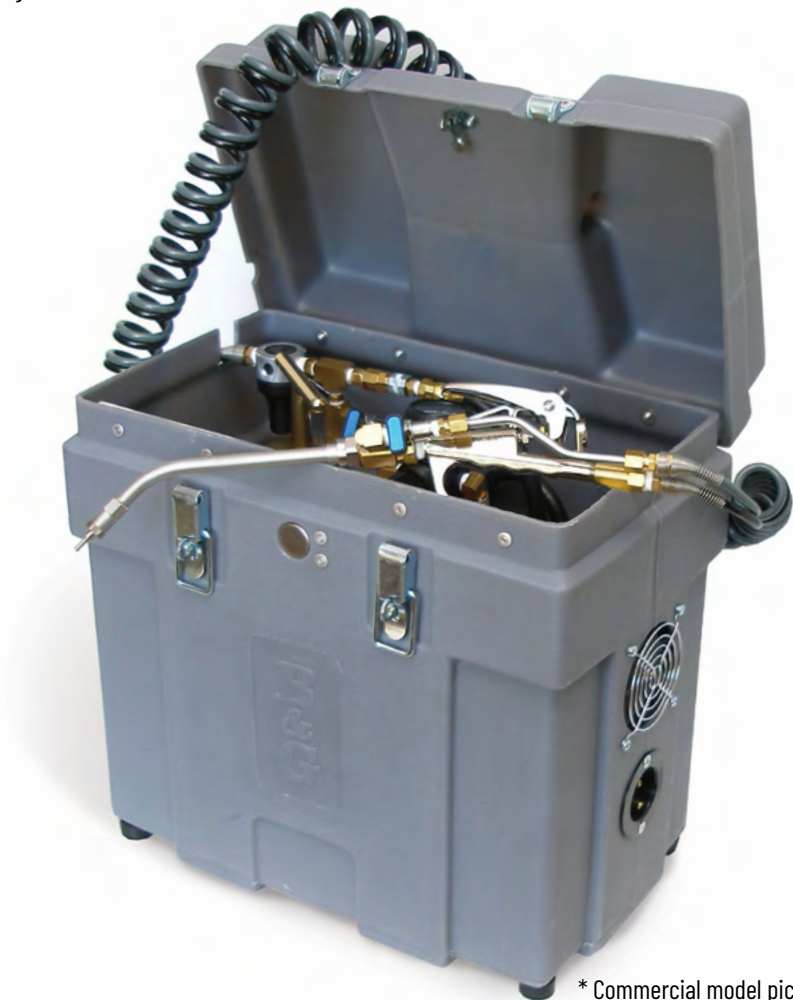
ITEM #	DESCRIPTION	MODEL #	ORDER #
1	Green Sprayer 9" Extension, CC 4-Way Tip	-	11003917
2	Green Sprayer 18" Extension, CC 4-Way Tip	-	11003958

PORTABLE AEROSOL SYSTEM (PAS)

Get deep wall penetration, along with crack-and-crevice and localized fogging capabilities, in one ideal tool. The B&G ULV Portable Aerosol System is designed for adaptability, giving operators the option to integrate liquid and aerosol products in one application or make use of each delivery method individually.

FEATURES

- Can be adjusted for delivery of a very fine ULV fog to a heavy mist to handle most applications
- One-gallon tank can be removed from case for cleaning or filling
- Brass and stainless-steel gun with choice of 9 in or 18 in extension, 10 ft coiled hose on standard model, 15 ft coiled hose on commercial model

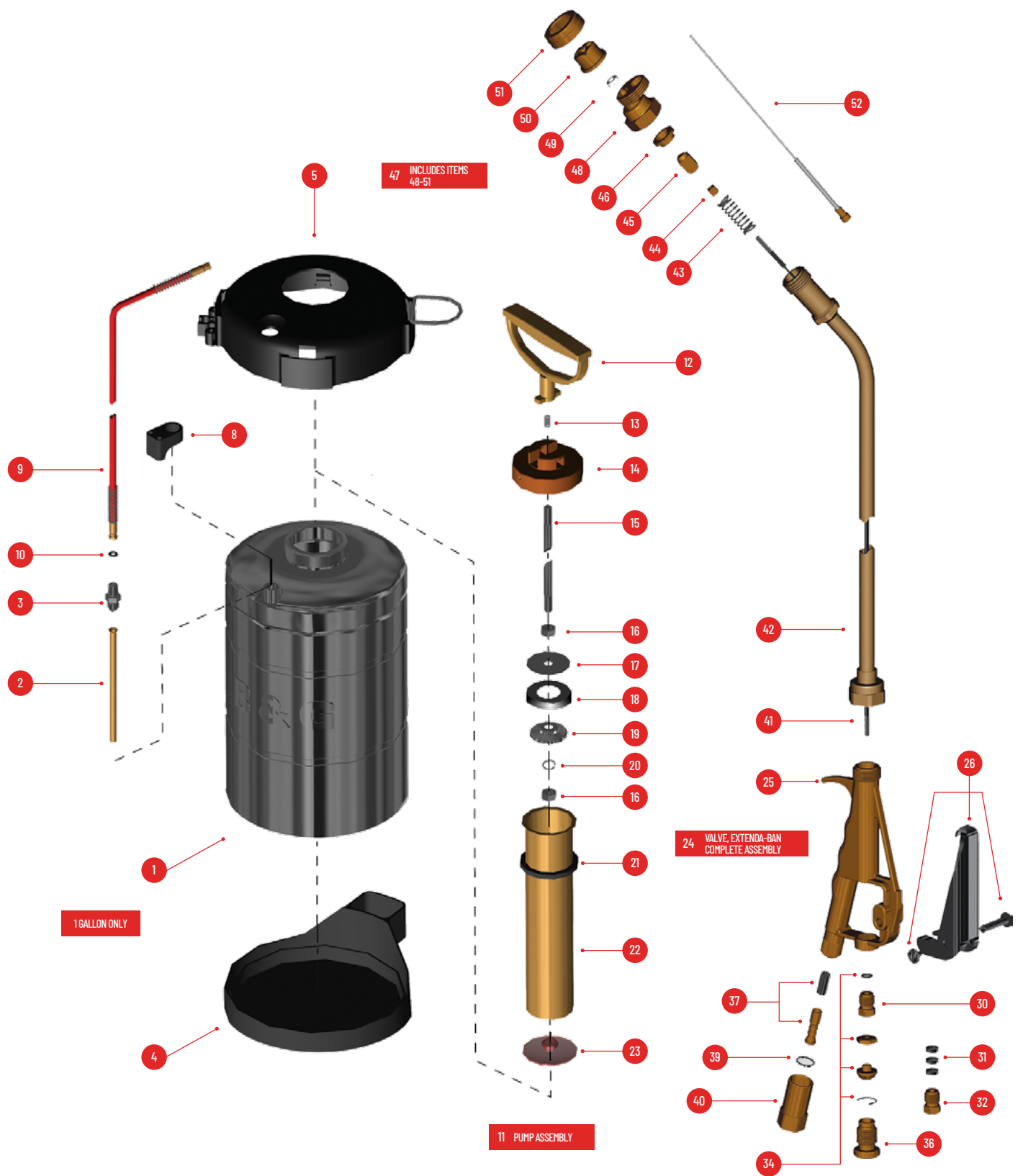


PORTABLE AEROSOL SYSTEM (PAS)

ITEM #	DESCRIPTION	MODEL #	ORDER #
1	PAS with 9" Extension	-	16290000
2	PAS with 18" Extension	-	16300000
3	Commercial PAS with 9" Extension	-	16270000
4	Commercial PAS with 18" Extension	-	16400000

SPRAYER PARTS

Find B&G Sprayer Parts to upgrade or rebuild your equipment. Our tanks and sprayers are expertly engineered for maximum compatibility and easy repairs.



ITEM #	PART #	ORDER #	DESCRIPTION
1	T-50	22024800	Tank (.5 Gallon)
	T-100	22025000	Tank (1 Gallon)
	T-200	22025100	Tank (2 Gallon)
	T-300	22025200	Tank (3 Gallon)
	T-500	22025250	Tank (5 Liter)
2	HS-297	22025600	Tube, Siphon (.5 Gallon)
	OS-297	22025700	Tube, Siphon (1 Gallon)
	TS-297	22025800	Tube, Siphon (2 Gallon)
	THS-297-01	22025901	Tube, Siphon (3 Gallon)
	FS-297	22025950	Tube, Siphon (5 Liter)
3	HA-298	22025300	Adapter, Hose
4	TB-1	22049477	Bottom, Tank (1 Gallon Only)
5	TT-1	22049476	Top, Tank (1 Gallon Only)
8	5700-H	22049475	Holder, Tip (Not used with Item 5)
9	D-50	22030100	Hose, 4 ft., red
10	D-51-P	22030400	Washer, Hose
11	PH-265	22026900	Pump Assembly (.5 Gallon)
	PO-265	22027000	Pump Assembly (1 Gallon)
	PF-265	22027125	Pump Assembly (2 Gallon and 5 Liter)
	PT-265	22027100	Pump Assembly (3 Gallon)
12	P-275	22029800	Handle, Pump
13	P-276	22029900	Spring, Pump Lock
14	P-274	22029700	Cap, Pump
15	PH-273	22029400	Rod, Plunger (.5 Gallon)
	PO-273	22029500	Rod, Plunger (1 Gallon)
	PF-273	22029650	Rod, Plunger (2 Gallon and 5 Liter)
	PT-273	22029600	Rod, Plunger (3 Gallon)
16	P-269-SS	22028250	Nut, Plunger
17	P-272	22029200	Plate, Back
18	NP-277	22029000	Cup, Polypropylene
	NP-271	22028800	Cup, Leather
19	NP-270	22028600	Plate, Cup Spreader
20	P-269A	22028400	Washer, Lock
21	P-268	22028000	Gasket, Pump
22	PH-267	22027400	Tube, Pump (.5 Gallon)
	PO-267	22027500	Tube, Pump (1 Gallon)
	PF-267	22027650	Tube, Pump (2 Gallon and 5 Liter)
22	PT-267	22027600	Tube, Pump (3 Gallon)

ITEM #	PART #	ORDER #	DESCRIPTION
23	PV-266	22027200	Valve, Check
24	120	22042101	Valve, Extenda-Ban 9" (less tip)
	220	22042203	Valve, Extenda-Ban 18" (less tip)
	420	22042778	Valve, Extenda-Ban 24" (less tip)
25	VB-147	22044450	Valve Body Kit
26	VT-140	22042800	Trigger, Valve Housing, Screw
28	-	22025150	Stainless siphon tube, pump cylinder
30	PN-150-2	22042455	Nut, Packing
30A	PN-150-1	22042454	(1999 - 2000) Nut, Packing
31	VP-151	22045099	Packing, Valve
32	PN-150	22044900	Nut, Packing (Prior to 1999)
34	AS-148	22044500	Adjusting Screw, Lock nut, Snap ring
36	SL-162	22046700	Nut, Safety Lock
37	MS-145-50	22043800	Strainer, 50 Mesh Support, Strainer
39	NG-146	22044200	Gasket, Nylon
40	SA-143	22043400	Housing, Strainer
41	VC-152	22045300	Cable, Valve 9"
	VC-153	22045400	Cable, Valve 18"
	VC-163	22045450	Cable, Valve 24"
42	VE-154	22045500	Extension, Brass 9"
	VE-155	22045600	Extension, Brass 18"
	VE-164	22045650	Extension, Brass 24"
	VE-154-SS	22045510	Extension, Stainless Steel 9"
	VE-155-SS	22045610	Extension, Stainless Steel 18"
	VE-164-SS	22045710	Extension, Stainless Steel 24"
43	VS-156	22045700	Spring, Seat Stem
44	SSL-157	22045900	Nut, Seat Stem
45	SS-158	22046100	Stem, Seat
46	SP-159	22046300	Gasket, Soft Seat
47	5850-CC	22049466	B&G 4 Way C&C Tip Assembly (Parts 48-51)
	5850	22049451	Tip Assembly (No C+C)
48	9751-M	22049300	Holder, B&G 4 Way C+C Tip
49	4190	22034700	Gasket, Viton®
50	5800-CC	22049467	Tip, B&G 4 Way C+C
	5800	22049452	Tip only (No C+C)
51	4596	22034500	Retainer, Tip
52	5700-B	22049200	Extension, C+C

SPRAYER ACCESSORIES

NOZZLES



8 B&G CLEANING KIT

Extend the life of B&G sprayers with the B&G cleaning kit.

- Better application
- Improve productivity



9 - 10 SPRAYER TUNE-UP KIT

Keeps sprayers in perfect working order. Apply pesticides that meet labeling requirements without over-application. Includes instructional flash drive on how to clean and repair your sprayer. Priced at a savings of over 20% compared to purchasing individual parts.



11 - 12 SPRAYER CADDY

Mounts in service vehicle and holds your sprayer firmly in place. Helps prevent damage or chemical spillage during transportation.

- Heavy duty metal construction
- Chip resistant finish
- Mounting holes for side or bottom mounting



13 COMFORT GRIP

- Reduces fatigue
- Non-slip grip
- Helps identify product in the spray tank
- Great for replacements



14 - 15 REPAIR KITS

Designed for rebuilding sprayers. Includes the most commonly needed parts when repairing a sprayer.



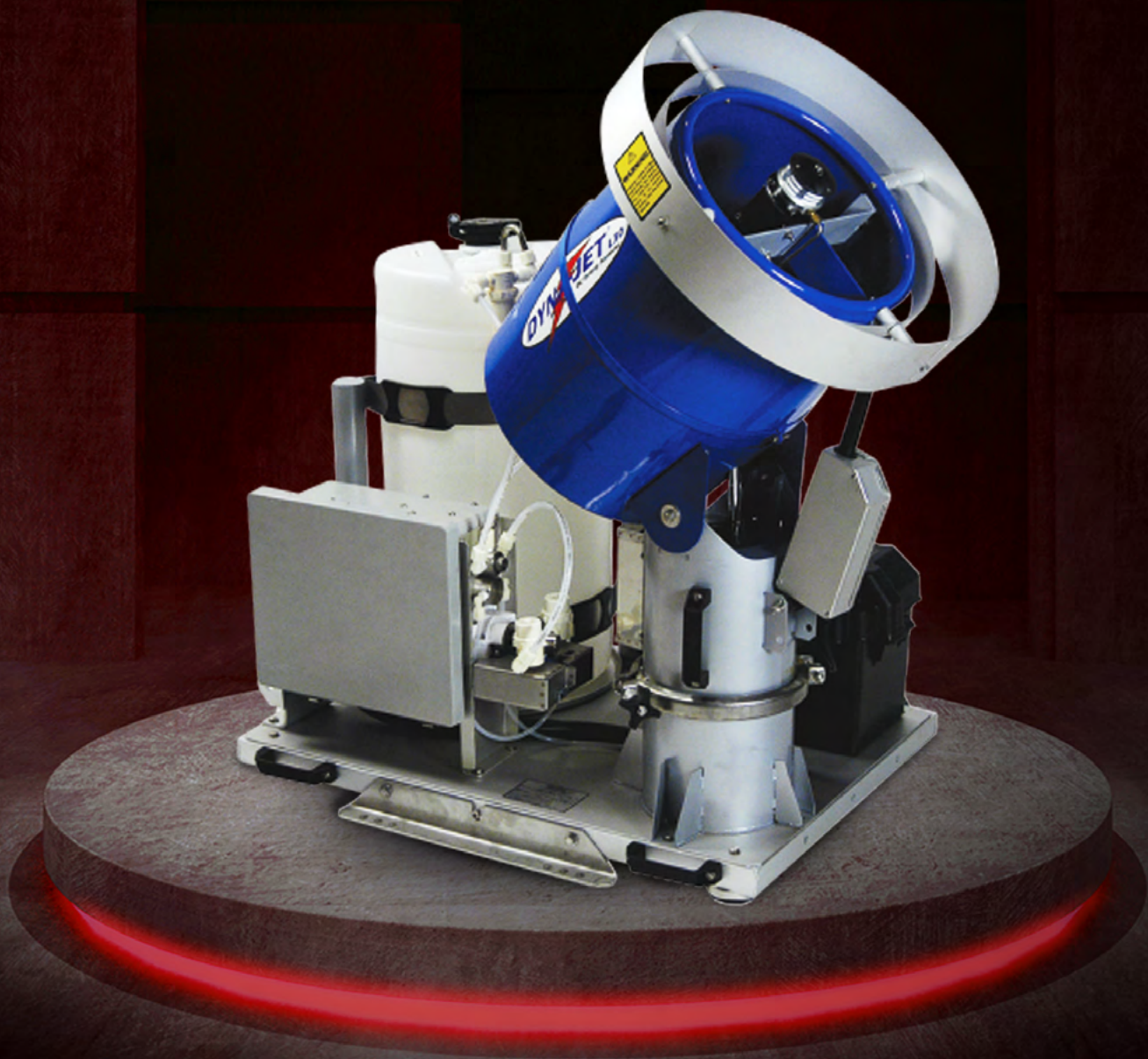
SPRAYER ACCESSORIES

ITEM #	DESCRIPTION	PART #	ORDER #
Tip Assemblies			
1	B&G 4 Way C+C Tip Assembly (complete)	5850-CC	22049466
2	B&G 4 Way Tip Assembly (complete)	5850	22049451
3	Pin-to-Cone (other sizes available)	5500-Y-2	22036600
4	Adjustable Pin-to-Cone	AV-210	22083602
Nozzles			
5	B&G 4 Way C+C Tip	5800-CC	22049467
6	B&G 4 Way Tip Only (no C+C orifice)	5800	22049452
7	Adjustable Tip Assembly	5900	22035200
B&G Cleaning Kit			
8	B&G Cleaning Kit	-	22049625
Sprayer Tune-Up Kit			
9	Kit with 4 way C+C Tip	-	22049630
10	Kit with 4 Way Tip	-	22049631
Sprayer Caddy			
11	Caddy - 1 gallon & 5 liter - tall	-	11009850
12	Caddy - 2, 3 gallon & 5 liter - short	-	11009860
Comfort Grip			
13	Comfort Grip Handle	-	22029800
Repair Kits			
14	Sprayers with XR Valve	GT-100	22049600
15	Sprayers with Extenda-Ban Valve	GD-124	22050100
16	Sprayers with Next Generation Valve	GD-124X	22050101

FOGGERS

**UNBEATABLE PERFORMANCE.
UNRIVALED QUALITY.**

Our foggers sit in a class of their own, with user-friendly innovation and unmatched coverage. Proven through constant testing and development, Curtis Dyna-Fog and B&G foggers continue to raise the bar for efficacy in disinfection, pest control and flying insect control.



HAND-CARRY ULV FOGGERS

ULV foggers are highly effective for mosquito and fly control operations. Their ability to generate precisely sized droplets makes them extremely versatile and, as the "ultra low-volume" name suggests, efficient and economical. Producing invisible fog and less noise, ULV foggers are the pro's choice for jobs in residential neighborhoods.

HURRICANE ES
ELECTROSTATIC EFFICIENCY
WITH CONSISTENT COVERAGE.

HAND-CARRY ULV ELECTROSTATIC FOGGER

The Hurricane ES uses advanced electrostatic technology to charge each droplet, providing uniform coverage on the target surface every time. This point-and-spray directional fogger is ideal for dispensing water-based products in commercial and residential areas, including hotels, schools, greenhouses, warehouses and medical facilities.

FEATURES

- Precision flow rate and droplet control
- Droplet size can be adjusted for ULV and residual spraying
- 8-foot electric power cord included

SPECIFICATIONS

- ADJUSTABLE FLOW RATES — 0-6.6 oz/min (3 gal/hr)
- DROPLET SIZE — 10-50 microns (VMD)
- DROPLET THROW — 15 ft
- COVERAGE — 60-80 sq ft
- ELECTROSTATIC THRESHOLD — 12-18 in from the front of the fogger
- DISTANCE
- TANK CAPACITY — 1-gal tank
- DISINFECTANT COMPATIBILITY — Water-based formulations
- DIMENSIONS — H 16 in / W 10 in / L 9 in
- WEIGHT — 7.635 lbs (empty)



HURRICANE ES

ITEM #	DESCRIPTION	MODEL #	ORDER #
1	110/120 volt AC, 6.8 Amps, 50/60 Hz	3001-5 Hurricane ES 110V	62150-3
2	220/240 volt AC, 3.4 Amps, 50/60 Hz	3001-6 Hurricane ES 220V	62150-4

HAND-CARRY ULV FOGGERS

HURRICANE ULTRA II

The Hurricane Ultra II is a premier choice for industrial and residential areas—from farms, greenhouses and warehouses to disinfection and disease control programs. Its chemical-resistant precision nozzle and low-profile, sturdy tank make the Hurricane Ultra II both functional and incredibly reliable.

FEATURES

- Precision flow rate and droplet control
- Droplet size can be adjusted for ULV and residual spraying
- 8-foot electric power cord included

SPECIFICATIONS

- ADJUSTABLE FLOW RATES — 0-6.6 oz/min (3 gal/hr)
- DROPLET SIZE — 10-50 microns
- COVERAGE FOR WATER-BASED APPLICATION — 60-80 sq ft
- TANK CAPACITY — 1-gal tank
- DISINFECTANT COMPATIBILITY — Water- and oil-based formulations
- DIMENSIONS — H 16 in / W 10 in / L 8.5 in
- WEIGHT — 7.630 lbs (empty)



HURRICANE ULTRA II

ITEM #	DESCRIPTION	MODEL #	ORDER #
1	110/120 volt AC, 6.8 Amps, 50/60 Hz	Hurricane Ultra 2 120V	62150-1
2	220/240 volt AC, 3.4 Amps, 50/60 Hz	Hurricane Ultra 2 240V	62150-2

HAND-CARRY ULV FOGGERS

FLEX-A-LITE 2600
A REPUTATION OF EXCELLENCE.

With its brawny construction and rugged dependability, the Flex-A-Lite 2600 sets the industry standard for heavy-duty point-and-spray foggers. A 1.5-gallon tank and four sturdy feet make it ideal for most industrial backyard applications, sanitization and janitorial applications. Each fogger is individually built and tested for performance.

FEATURES

- Adjustable flow rate up to 2.5 ounces/minute
- Available with 110V or 220V connections
- Droplet size: 20-35 microns (ULV), 56 microns (power mist)

SPECIFICATIONS

HOSE	18 in
TANK SIZE	1.5-gal tank
ADJUSTABLE FLOW RATES	0-9.4 oz/min, 0-4.4 gal/hr
DROPLET SIZE	ULV (20-35 microns) to power mist (56 microns)
DROPLET THROW	15 ft
COVERAGE	40 sq ft at high application setting
DISINFECTANT COMPATIBILITY	Water- and oil-based formulations with low to moderate viscosity
WEIGHT	9 lbs (empty)
DIMENSIONS	H 12 in / W 8.5 in / L 15 in



FLEX-A-LITE 2600

ITEM #	DESCRIPTION	MODEL #	ORDER #
1	Flex-A-Lite Fogger	2600	15014901

HAND-CARRY ULV FOGGERS

ULTRA-LITE 2400

This heavy-duty ULV fogger is used worldwide for flying insect control. Its low-profile design is equally helpful for commercial and residential jobs and makes servicing crawl spaces and attics a whole lot easier. Also useful for deploying disinfectants, deodorizers and other chemicals.

FEATURES

- Variable delivery from ULV droplets to power mist
- Adjustable flow rate up to 2.5 oz/min
- Available in 110V and 220V models



ULTRA-LITE 2400

ITEM #	DESCRIPTION	MODEL #	ORDER #
1	Ultra-Lite Fogger	2400	15015100

MY-TI-LITE 2300

Thanks to its compact size and stability, the My-Ti-Lite 2300 is equally capable servicing residential and commercial accounts. It's the preferred choice for flying insect control in attics, crawl spaces or any other space with limited accessibility. Ideal for general fogging of pesticides and other applications.

FEATURES

- Nozzle preset at 45-degree angle for upward lift and improved circulation
- Low-profile design for increased stability
- 1.5-gallon tank capacity



MY-TI-LITE 2300

ITEM #	DESCRIPTION	MODEL #	ORDER #
1	My-Ti-Lite Fogger	2300	15015000

HAND-CARRY ULV FOGGERS

CYCLONE ULTRA

The Cyclone Ultra has a two-stage blower and metering valve that assure particles under 20 microns regardless of flow rate. Ideal for areas such as hospitals, nursing homes, schools, apartment buildings, backyard applications, restaurants and greenhouses. The Cyclone Ultra can apply pesticides, deodorants, fungicides, duct sealant, disinfectants and miticides efficiently and economically. The Cyclone can be used in indoor/outdoor applications.

SPECIFICATIONS

- ADJUSTABLE FLOW RATES — 1.4–3.1 oz/min, 0.6–1.5 gal/hr
- DROPLET SIZE — 8–10 microns (formulations with high viscosity have larger droplets, 20–24 microns)
- DROPLET TROW — Droplet throw 8–12 ft
- BLOWER — Continuous duty, 200,000 rpm with replaceable brushes
- TANK SIZE — 1-gal tank
- DISINFECTANT COMPATIBILITY – Water- and oil-based formulations with moderate to high viscosity
- WEIGHT — 9.3 lbs (empty)



CYCLONE ULTRA

ITEM #	DESCRIPTION	MODEL #	ORDER #
1	Cyclone Ultra 110 Volt	2734	62250-1
2	Cyclone Ultra 220 Volt	2736	62250-2

HAND-CARRY ULV FOGGERS

TORNADO, TORNADO FLEX

The multi-range Tornado offers a 3-gallon tank for extended use, large formulation filter with removable screen and a metering valve that allows adjustable outputs from a heavy mist of 5 gallons per hour down to low outputs in the ULV range. Ideal sprayer for controlling mosquitos, flies and other invasive species that spread disease vectors.

Now you can apply pesticides, deodorants, fungicides, duct sealant, disinfectants, miticides, etc. more safely, more efficiently, more economically and in a variety of indoor/outdoor applications such as hospitals, schools, homes, hotels, resorts, greenhouses, food processing plants, warehouses, dairy and poultry farms and horse stables.

TORNADO FLEX

- 18-in flexible hose for directional application and precision



TORNADO, TORNADO FLEX

ITEM #	DESCRIPTION	MODEL #	ORDER #
1	Tornado 110 Volt	2895	62380
2	Tornado 220 Volt	2897	62382
3	Tornado Flex 110V	Series 2	63800-2

FEATURES

- Precision metering valve
- Outputs from a mist of 5 gallon/hour down to ULV range

SPECIFICATIONS

INPUT POWER	110/120 V AC, 8.5 amps, 50/60 Hz; 210/250 V AC, 4.2 amps, 50/60 Hz (model 3004)
ADJUSTABLE FLOW RATES	2.4-11.4 oz/min, 1.1-5.3 gal/hr
FLOW RATE	0-18.5 LPH
DROPLET SIZE	5-40 microns
TANK CAPACITY	3-gal tank
DISINFECTANT COMPATIBILITY	Water- and oil-based formulations with moderate to high viscosity
WEIGHT	Tornado: 18.8 lbs (empty) Tornado Flex: 20 lbs (empty)



BACKPACK ULV FOGGERS

Put on a backpack fogger and bring power everywhere you go. Reliable and extremely mobile, our backpacks let applicators accurately apply vector control products to any spot they need.

TWISTER XL3
COMPACT DESIGN WITH POWER
ABOVE ITS WEIGHT CLASS.

GASOLINE-POWERED BACKPACK ULV FOGGER

When you have a lot of ground to cover, you want the most advanced and sophisticated backpack fogger on the market. The Twister XL3 features a remarkable nozzle and blower system that outperforms competitors in value, durability and performance in open-air spaces like stadiums, resorts, backyards and amphitheaters. Compact, lightweight and designed to minimize engine vibrations, the Twister XL3 is ergonomically suited for extended use.

FEATURES

- 4-stroke engine with low emissions and high performance
- 1-gallon pressurized formulation tank

SPECIFICATIONS

ENGINE	Honda 4-stroke, operating speed 7,500 rpm
SYSTEM	Gasoline-powered backpack
HOSE	4 ft
TANK SIZE	1-gal tank
WEIGHT	26 lbs (dry weight)
ADJUSTABLE FLOW RATES	1.5-6 oz/min (interchangeable nozzles)
DROPLET SIZE	10-34 microns (oil-based formulations provide 10-micron droplets)
DROPLET THROW	10-12 ft
DISINFECTANT COMPATIBILITY	Water- and oil-based formulations
DIMENSIONS	H 22.5 in / W 12 in / L 14.7 in
SHIPPING DATA	H 16 in / W 19 in / L 26 in; 36 lbs; 4.39 cu ft



TWISTER XL3

ITEM #	DESCRIPTION	MODEL #	ORDER #
1	Twister XL3	-	39750

BACKPACK ULV FOGGERS

VERSA-FOGGER

Portable and powerful, Versa-Fogger is designed for a wide variety of applications from mosquito control and insect control to disinfection. With mobility, range and precision, this backpack fogger fully covers every target. Its heavy-duty construction, along with a deluxe backpack harness, will give you years of dependable service.

FEATURES

- Reliable Honda 4 stroke motor - No need to mix oil with the gasoline
- Emissions compliant motor
- 1-gallon, pressurized formulation tank
- Adjustable handheld nozzle
- Three stage rotary blower
- Lightweight - less than 26 lbs (empty)
- .67 quart fuel capacity
- 2-year motor warranty (1-year other components)

SPECIFICATIONS

ENGINE	Honda 4-stroke
SYSTEM	Gasoline-powered backpack
HOSE	4 ft
TANK SIZE	1-gal tank
WEIGHT	26 lbs (dry weight)
ADJUSTABLE FLOW RATES	1.5-6 oz/min (interchangeable nozzles)
DROPLET SIZE	33-44 microns (oil-based formulations provide 20 micron droplets)
DROPLET THROW	10-12 ft
DISINFECTANT COMPATIBILITY	Water- and oil-based formulations
DIMENSIONS	H 22.5 in / W 12 in / L 14.7 in
SHIPPING DATA	H 16 in / W 19 in / L 26 in; 36 lbs; 4.39 cu ft



VERSA-FOGGER

ITEM #	DESCRIPTION	MODEL #	ORDER #
1	Versa-Fogger	-	45000000

TRUCK-MOUNT ULV FOGGERS

For the bigger jobs that require considerable area coverage, mount a high-capacity ULV fogger on the service vehicle of your choice, from golf cart to heavy-duty truck.

DYNA-JET L-30

BIG TIME BATTERY POWERED FOGGING.

The Dyna-Jet L-30 is the world's most technologically advanced, battery-powered electric truck or cart mount ULV fogger. Its digitally controlled, high-speed rotary atomizer produces the industry's most consistently sized spray droplets. A unique, remote-controlled tilting head allows for multi-positioning of the spray. Operating entirely on electric power, you'll avoid maintenance expenses normally associated with gas-powered equipment and offer quite a service.

FEATURES

- Translucent formulation tank design allows for quick level checking
- Remote control-operated
- Lightweight (2-person load when empty)

SPECIFICATIONS

ENGINE	Atomizer motor 12 volt DC, brushless, high speed-shielded bearings, water-resistant cover
BLOWER	High-output, 1,350 cu ft/min
SYSTEM	Truck mount
TANK SIZE	15-gal tank
FLUSH TANK SIZE	1-gal tank
WEIGHT	147 lbs (with battery), 105 lbs (without battery)
ADJUSTABLE FLOW RATES	14 oz/min, swath distance (30 m)
DROPLET SIZE	90% of droplets 20 microns or below
DROPLET THROW	50 ft
DIMENSIONS	H 39 in / W 29 in / L 44 in
SHIPPING DATA	H 46 in / W 36 in / L 46 in
NOISE LEVEL	69 dB at loudest point
DISINFECTANT COMPATIBILITY	Water-based formulations

OPTIONAL

- 12 volt high-performance battery with AC charging kit
- Synchroflow Radar Flow Control
- Dyna-Trax GPS tracking system
- Digital tachometer
- AC timer kit
- Large capacity filter kit
- Application-specific formulation filters
- Water-resistant machine cover

TRUCK-MOUNT ULV FOGGERS



DYNA-JET L-30

ITEM #	DESCRIPTION	MODEL #	ORDER #
1	Dyna-Jet L-30 Electric ULV Aerosol Generator	65100	-
2	Dyna-Jet L-30 Electric ULV Aerosol Generator - Export only	65100-20	-
3	Dyna-Jet L-30 Electric ULV GPS Syncroflow	65100-1G	-
4	Dyna-Jet L-30 Electric ULV Radar Syncroflow	65100-1R	-

TRUCK-MOUNT ULV FOGGERS

MINI-LITE

Light, affordable and handy, the Mini-Lite is the ultimate portable sprayer. Designed for comfort and ease of use, this fogger produces adjustable flow rates to accommodate any indoor or outdoor spraying job. Built to aircraft tolerances to achieve lightweight, superior performance, the Mini-Lite can be easily mounted on a small open utility vehicle or portable cart for mosquito and fly control operations.

FEATURES

- Portable, lightweight package
- Easily mounted on SUV for mosquito and fly control
- Lightweight, one-person lift
- Gasoline-powered engine



MINI-LITE

ITEM #	DESCRIPTION	MODEL #	ORDER #
1	Mini-Lite	-	63910

TRUCK-MOUNT ULV FOGGERS

ATV-1 ULV FOGGER

Mountable on almost any open maintenance truck, golf cart or all-terrain vehicle, the ATV-1 ULV Fogger is ideal for mosquito control in small and large areas. The fogger features a sturdy, metal manifold with twin MicroTech nozzles designed for wide coverage. Its multi-stage blower is powered by a low-maintenance, four-cycle Honda motor capable of delivering droplets accurately up to 20 feet away.

FEATURES

- 5-gallon pressurized formulation tank provides constant flow to nozzles
- Dual siphon tubes and filters
- Adjustable flow rate: adulticide (6.8 oz/min, 3.2 gal/hr); larvicide (12.6 oz/min)
- Gasoline-powered engine



ATV-1 ULV FOGGER

ITEM #	DESCRIPTION	MODEL #	ORDER #
1	ATV-1 ULV Fogger	45000001	-

MINI-PRO 8HP

Designed with the pro in mind, the Mini-Pro is engineered to dispense insecticides, fungicides, germicides, disinfectants and other chemical products effectively and efficiently. Featuring a formulation pump with adjustable output up to 3840 ml/min, this fogger is perfectly capable of managing most heavy-duty jobs. The Mini-Pro is ideal for warehouses, factories, campgrounds, schools, shopping centers, and other large spaces.

FEATURES

- Simple to operate, set up and store
- 360 degree adjustable nozzle system
- Corrosion- and UV-resistant formulation tank
- Gasoline-powered engine



MINI-PRO 8HP

ITEM #	DESCRIPTION	MODEL #	ORDER #
1	Mini-Pro/Diaphragm Pump	-	63600-1

TRUCK-MOUNT ULV FOGGERS

TYPHOON 1

Typhoon 1 is the industry standard for medium-sized, vehicle-mounted ULV cold foggers. Its powerful overhead valve engine, choice of pumping systems and variety of tailored options give the Typhoon 1 the flexibility to attack any pest control job. Whether spraying adulticide, larvicide or barrier sprays, the fogger delivers uniform droplets at the recommended flow rates and pressures. When paired with a GPS system and mapping software, Typhoon 1 has the required recording and reporting capabilities to assist with regulatory compliance.

FEATURES

- Choice of 3 pumping systems: Diaphragm, Digital Gear or FMI Piston
- Adjustable flow rate: 0-128 oz/min
- Highly efficient Multi-Mist nozzles
- Gasoline-powered engine

SPECIFICATIONS

- ENGINE — Kohler 9.5 hp (277 cc), 4-cycle, OHV, electric start. Optional Honda 10.5 hp (344 cc), 4-cycle, OHV, or Yanmar diesel
- BLOWER — High volume, positive displacement, rotary type; 8.5 psi @ 2750 rpm; 12 psi (0.82 bar) 205 cfm (5.8 cubic meters/min)
- NOZZLES — High efficiency single nozzle, adjusts 360 degrees, removable for cleaning
- FORMULATION OUTPUT — Diaphragm pump - 0-128 oz/min (0-3.8 liters/min), FMI pump - 0-18 oz/min (0-532 ml/min)
- FUEL TANK SIZE — 1.8 gallons (7 liters) with a gauge
- FORMULATION TANK SIZE — 15 gallons (57 liters) with lockable cap
- FLUSH TANK SIZE — 1-gal tank
- WEIGHT — Empty: 297 lbs (135 kg) Full: 412 lbs (187 kg)
- DROPLET SIZE — 90% of droplets below 20 microns VMD
- DIMENSIONS — H 32 in / W 29 in / L 41.5 in
- SHIPPING DATA — H 39 in / W 40 in / L 48 in



TYPHOON 1

ITEM #	DESCRIPTION	MODEL #	ORDER #
1	Typhoon 1 FMI Pump	-	64600-1
2	Typhoon 1 Diaph Pump	-	64600-2
3	Typhoon 1 FMI - Export only	-	64600-21
4	Typhoon 1 Diaph Pump Export	-	64600-22

TRUCK-MOUNT ULV FOGGERS

TYPHOON 2

This medium-powered ULV cold applicator is driven by an 11-hp Honda engine and offers a choice of pumping systems for a wider range of applications. The Typhoon 2 features two Multi-Mist nozzles to apply precisely sized droplets at recommended flow rates for optimum results. Its relatively small frame allows the Typhoon 2 to be mounted on almost any service vehicle or truck and it is capable of delivering adulticides, larvicides and barrier sprays.

FEATURES

- Remote control: on/off switch, engine start, spray on/off, flush on/off
- Choice of pumping system: Diaphragm, Digital Gear or FMI Piston
- Highly efficient Multi-Mist nozzles
- Gasoline-powered engine

SPECIFICATIONS

ENGINE	11 hp Honda
BLOWER	200CFM (5.6 cubic meters/ min., rotary, positive displacement direct drive)
NOZZLE	Two high output Multi-Mist "360" adjustable
PUMPING SYSTEM	Diaphragm 0-128 oz. (3.8 l) / min. FMI 0-18 oz. (532 ml) / min
REMOTE CONTROL FEATURES	Diaphragm / FMI: Spray On / Off, Machine On / Off, engine start
TANK CAPACITIES	Formulation 15 gallons (57 liters), Flush 1 gallon (3.8 liters)
WEIGHT	297 lbs (135 kg)



TYPHOON 2

ITEM #	DESCRIPTION	MODEL #	ORDER #
1	Typhoon 2 FMI	-	63300-1
2	Typhoon 2 FMI - Export only	-	63300-20
3	Typhoon 2 Diaph Pump	-	63300-3

TRUCK-MOUNT ULV FOGGERS

MAXI-PRO 2

The Maxi-Pro 2 is backed by 30 years of performance as the industry's most reliable, professional-grade, vehicle-mounted ULV sprayer. Its high-volume diaphragm pumps resist corrosion and provide improved longevity. The Maxi-Pro 2 features an 18-horsepower, twin cylinder Briggs and Stanton engine, and twin Dynafog Multi-Mist nozzles with remote directional control of boom for precise delivery of aerosols.

FEATURES

- Formulation output: Diaphragm pump 0-128 oz/min
- Droplet size: 90% of droplets below 20 microns
- Nozzles: Twin Dynafog Multi-Mist with remote directional control of boom
- Gasoline-powered engine



MAXI-PRO 2

SPECIFICATIONS

ENGINE	Briggs & Stratton 18 hp, twin cylinder, 4 cycle, electric start with alternator
BLOWER	Direct drive, positive displacement, rotary type; output up to 400 cfm air
NOZZLES	Twin Dynafog Multi-Mist with remote directional control of boom
FORMULATION OUTPUT	Diaphragm pump - 0-128 oz/min (0-3.8 liters/min)
PUMP SYSTEMS	Diaphragm pump - high volume, corrosive resistant
FUEL TANK SIZE	12.5-gal tank (47 liters) with a gauge
FORMULATION TANK SIZE	15-gal tank (57 liters) with lockable cap
FLUSH TANK SIZE	1-gal tank
WEIGHT	Empty: 456 lbs (206 kg)
DROPLET SIZE	90% of droplets below 20 microns VMD
DIMENSIONS	H 50 in / W 37 in / L 44 in
SHIPPING DATA	H 39 in / W 39.5 in / L 47 in

ITEM #	DESCRIPTION	MODEL #	ORDER #
1	Maxi-Pro 2P	-	62825-5
2	Maxi-Pro 2D	-	62825-7

TRUCK-MOUNT ULV FOGGERS

MAXI-PRO 4

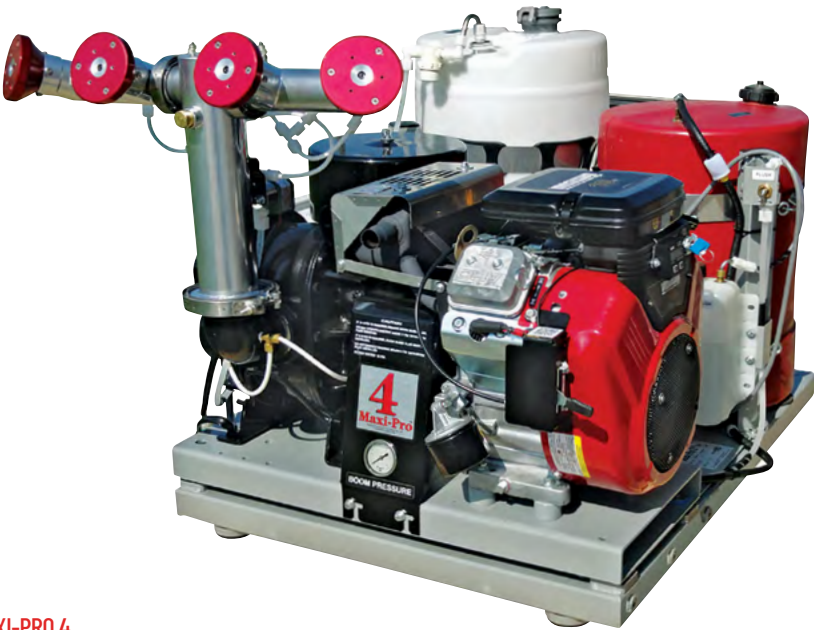
Powerful, effective and efficient, the Maxi-Pro 4 is the top option for vehicle-mounted ULV foggers. With four nozzles—engineered to rotate a complete 360°—you'll reach every target without getting out of the truck. Powered by an overhead valve 18 hp engine, this powerful fogger offers the highest performance specifications in the vector control industry. Welded steel construction and powder-coat finishes make for an extremely sturdy, corrosion-resistant frame.

FEATURES

- Briggs & Stratton 18 hp, twin cylinder, 4 cycle engine
- Four Dyna-fog Multi-Mist nozzles with 360-degree range of motion
- Droplet size: 90% below 20 microns
- Gasoline-powered engine

SPECIFICATIONS

ENGINE	Briggs & Stratton 18 hp, twin cylinder, 4 cycle, electric start with alternator
BLOWER	Direct drive, positive displacement, rotary type; output up to 400 cfm air
NOZZLES	Four Multi-Mist nozzles adjustable 360 degrees
FORMULATION OUTPUT	0-20 oz/min (0-600 ml/min)
PUMP SYSTEMS	Diaphragm pump - high volume, corrosive resistant, FMI - ceramic piston with carbon cylinder, Optional Radar Syncroflo Automatic Control with digital display
FUEL TANK SIZE	12.5-gal tank (47 liters) with a gauge
FORMULATION TANK SIZE	15-gal tank (57 liters) with lockable cap, liquid level graduation marks
FLUSH TANK SIZE	1-gal tank
DROPLET SIZE	90% of droplets below 20 microns VMD
DIMENSIONS	H 32 in / W 33 in / L 44 in
SHIPPING DATA	H 39 in / W 36 in / L 46 in



OPTIONAL

- 20 hp OHV, Honda engine
- Gear pump
- Diaphragm pump
- Heavy duty 12 V battery (add 20 lbs; 9.1 kg)
- Heavy duty machine cover
- Spray hour meter
- Dyna-Trax 2 GPS Recording

MAXI-PRO 4

ITEM #	DESCRIPTION	MODEL #	ORDER #
1	MaxiPro 4 FMI	-	62825-1
2	MaxiPro 4 FMI Export	-	62825-21
3	MaxiPro 145 FMI	-	62825-18
4	MaxiPro 145 FMI (BRAZIL)	-	62825-18X
5	MaxiPro 145 FMI 2 Nozzles	-	62825-24A

TRUCK-MOUNT ULV FOGGERS

DYNA-FOG MODEL 1200

The ultimate fog applicator for large areas, Dyna-Fog Model 1200 is capable of blanketing enormous spaces with dense, heavy fog that destroys insects and pests faster than competing equipment. Efficient and extremely quiet, no other machine is capable of delivering large volumes of fog at such low noise levels. Offering convenience and tremendous capacity—delivering 120 gallons an hour—the Dyna-Fog Model 1200 can cover 12 acres in just one minute.

FEATURES

- Faster coverage saves man hours and truck time
- In-cab operating capabilities: remote start, fog on/off, heating chamber on/off, controllable output
- Gasoline-powered engine

SPECIFICATIONS

ENGINE	Kohler 9.5 hp (277 cc), 4-cycle, OHV, electric start. Optional Honda 10.5 hp (344 cc), 4-cycle, OHV, or Yanmar diesel
NOZZLES	Adjustable high-volume output single nozzle, two 45 degree directional elbows with stainless steel clamps
FORMULATION OUTPUT	15-120 gal/hr (57- 454 liters/hr) covers 12 acres (5 hectares/min)
PUMP SYSTEMS	Positive displacement gear pump
FUEL TANK SIZE	5-qt tank (4.7 liters)
FORMULATION TANK SIZE	15-gal tank (56.8 liters)
GAUGES AND METERS	Digital tachometer/Hourmeter for engine, pump control pressure gauge, 115V AC meter for generator, remote control Hourmeter/ Temperature gauge
DIMENSIONS	H 32 in / W 35 in / L 79 in
SHIPPING DATA	H 42 in / W 43 in / L 60 in



OPTIONAL

- Cold Fog Kit #49092
- Weather Proof Cover #49100-1

DYNA-FOG MODEL 1200

ITEM #	DESCRIPTION	MODEL #	ORDER #
1	Model 1200	-	49000
2	Model 1200 Export	-	49000-20
3	Model 1200 Diesel	-	49000-22

THERMAL FOGGERS

Perfect for usage in large, outdoor areas, thermal foggers produce tiny droplets and visible fog that's easy to monitor and control. Spray from thermal foggers travels farther and can penetrate challenging environments, like dense foliage.

GOLDEN EAGLE
STRIKE WITH PRECISION EVERY TIME.

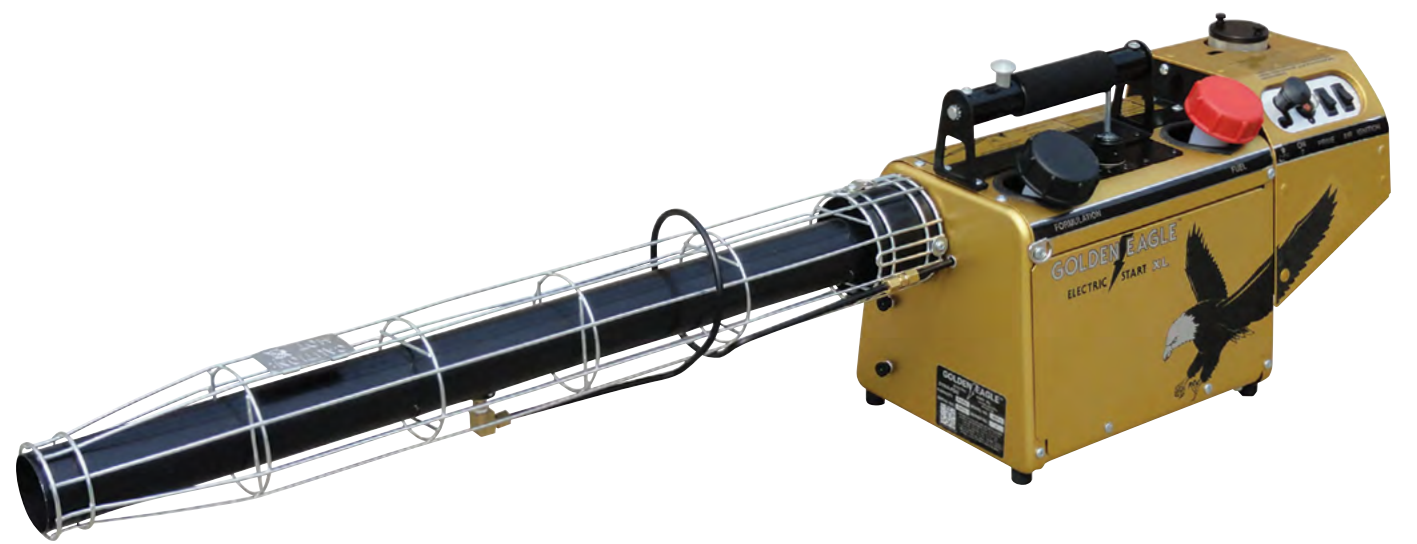
The Golden Eagle portable thermal fogger enjoys worldwide industry acclaim. And for good reason. No other machine in its size class surpasses the capacity and speed of the Golden Eagle in completing chemical application jobs easily, effectively and economically. Its revolutionary electric starting system assures reliability, fuel efficiency and ease of operations, eliminating the need for manual starting.

FEATURES

- Lightweight
- Electric start
- Dispenses oil-based insecticides, fungicides, germicides, disinfectants and other chemical products
- Gasoline-powered engine

SPECIFICATIONS

ENGINE	30 hp; 22 kW; 18,900 Kcal/hr
FORMULATION OUTPUT	0-9 gallons/hr; 0-34 liters/hr; covers 57,000 cu ft; 1600 cu meters/min
DROPLET SIZE	0.5 – 50 microns VMD
FUEL TANK SIZE	1.2-qt tank (1.0 liter)
FORMULATION TANK SIZE	1.1-gal tank (4.2 liters)
FUEL CONSUMPTION	0.5 gal/hr (1.9 liters/hr)
POWER SUPPLY	Eight 1.5 V D-size alkaline batteries, a rechargeable 12V DC battery (optional), any 12V DC vehicle battery; connect to 12V receptacle with auxiliary battery cable
WEIGHT	Empty: 19 lbs (8.6 kg) Full: 27 lbs (12.2 kg)
DIMENSIONS	H 14.5 in / W 9.5 in / L 52 in
SHIPPING DATA	H 16 in / W 11 in / L 55 in



GOLDEN EAGLE

ITEM #	DESCRIPTION	MODEL #	ORDER #
1	Golden Eagle Electric Start XL	-	58500
2	Golden Eagle Electric Start XL - Export only	-	58500-20

THERMAL FOGGERS

SUPERHAWK II

Compact, ultra lightweight and powerful, the Superhawk II portable thermal fogger is ideal for both local and remote applications. Its pulse-jet powered, stainless steel, 30-horsepower engine is capable of producing large volumes of dense fog to easily manage the largest jobs. Built to impeccable quality standards, the Superhawk II is perfect for any mosquito and pest control program where performance, simplicity and reliability are required.

FEATURES

- Durable anodized aluminum construction
- Fast and easy to start every time
- Gasoline-powered engine

SPECIFICATIONS

ENGINE	30 hp; 22 kW; 18,900 Kcal/hr
FORMULATION OUTPUT	0-11 gal/hr; 0-42 liters/hr; covers 76,000 cu ft or 2200 cu meters/min
DROPLET SIZE	0.5 – 50 microns VMD
FLOW CONTROL	Metering valve or fixed orifice
FUEL TANK SIZE	1.2-qt tank (1.0 liter) vented, non-pressurized
FORMULATION TANK SIZE	1.2-gal tank (4.5 liters) pressure = 4 psi; 0.28 bar
FUEL CONSUMPTION	0.5 gal/hr (1.9 liters/hr)
POWER SUPPLY	Eight 1.5 V D-size alkaline batteries, a rechargeable 12V DC battery (optional), any 12V DC vehicle battery; connect to 12V receptacle with auxiliary battery cable
WEIGHT	Empty: 16.5 lbs (7.5 kg) Full: 19 lbs (11.1 kg)
DIMENSIONS	H 14 in / W 9 in / L 52 in
SHIPPING DATA	H 16 in / W 11 in / L 55 in



SUPERHAWK II

ITEM #	DESCRIPTION	MODEL #	ORDER #
1	Superhawk Orifice	-	58800
2	Superhawk Orifice - Export only	-	58800-20
3	Superhawk Metering	-	58800-1
4	Superhawk Metering - Export only	-	58800-21
5	SuperHawk XP Orifice	-	58900
6	SuperHawk XP Orifice - Export only	-	58900-20
7	SuperHawk XP Metering	-	58900-1
8	SuperHawk XP Metering - Export only	-	58900-21

THERMAL FOGGERS

BLACKHAWK

This rugged, truck-mountable thermal fogger is designed to efficiently disperse petroleum-based products over large service areas, including greenhouses, warehouses, parks, gardens and golf courses. Durable construction, easy maintenance and a patented electric starting system make the Blackhawk reliable, effective and easy to operate. With capacity up to 18 gallons per hour, the Blackhawk produces 114,000 cubic feet of output per minute.

FEATURES

- Thermal aerosol-fog, petroleum-based, resonant pulse principle
- Automatic shut-off valve enables operator to fog while driving
- Formulation tank: 3 gal
- Gasoline-powered engine

SPECIFICATIONS

ENGINE	44 hp; 33 kW
FORMULATION OUTPUT	0-18 gallons/hr (0-68.4 liters/hr) covers 114,000 cu ft (3200 cu meters/min)
DROPLET SIZE	0.5 - 50 microns VMD
FUEL TANK SIZE	0.5-gal tank (1.9 liters)
FORMULATION TANK SIZE	3-gal tank (11.4 liters)
FUEL CONSUMPTION	0.6 gal/hr (2.3 liters/hr)
POWER SUPPLY	Eight 1.5 V D-size alkaline batteries, a rechargeable 12V DC battery (optional), any 12V DC vehicle battery; connect to 12V receptacle with auxiliary battery cable
WEIGHT	Empty: 41 lbs (18.6 kg) Full: 75 lbs (34.1 kg)
DIMENSIONS	H 16.8 in / W 15 in / L 68.3 in
SHIPPING DATA	H 20 in / W 19 in / L 71 in



BLACKHAWK

ITEM #	DESCRIPTION	MODEL #	ORDER #
1	Blackhawk Electric Start	-	86550
2	Blackhawk Electric Start - Export only	-	86550-20
3	Blackhawk Electric Start Pro Plastic Tank	-	86550-3

THERMAL FOGGERS

MISTER III

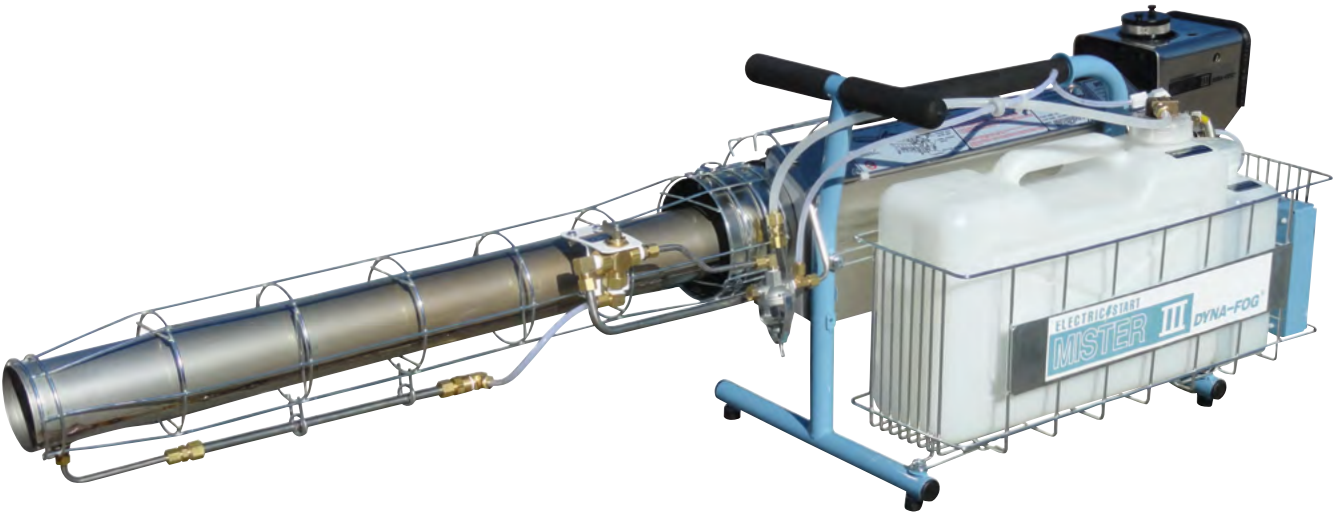
Versatile, reliable and economical, the Mister III disperses a wide array of fungicides, insecticides and disinfectants. Powered by a jet-pulse engine, this thermal mister is capable of dispensing wettable powders, emulsifiable concentrates and flowables with a non-flammable carrier at a rate of 12 GPH. Its patented electric starting system eliminates hand pumping and gives you an easy, reliable start every time.

SPECIFICATIONS

- ENGINE ————— 44 hp; 33 kW
- FORMULATION OUTPUT ——— 0-12 gal/hr; 0-45.4 liters/hr
- FORMULATION TANK SIZE ——— 3-gal tank

FEATURES

- Ideal for use in greenhouses, warehouses, factories, plants and other large commercial areas
- Removable battery holder for easy access
- Gasoline-powered engine



MISTER III

ITEM #	DESCRIPTION	MODEL #	ORDER #
1	Mister III	-	86650-1
2	Mister III - Export only	-	86650-20

THERMAL FOGGERS

TRAILBLAZER

This portable thermal mister is engineered with the user in mind. Equipped with a patented 12-volt electric starting system, the Trailblazer is reliable, effective, fuel efficient and easy to operate. Able to dispense both petroleum and water-based products, the Trailblazer is ideal for applying fungicides, insecticides, germicides, disinfectants and odor counteractants. It does so more easily and more efficiently than similar applicators.

FEATURES

- Stainless-steel jet-pulse engine
- Covers 32,000 cubic feet
- Chemical-resistant polyethylene formulation and fuel tanks
- Gasoline-powered engine

SPECIFICATIONS

ENGINE	30 hp; 18 kW; 15,100 Kcal/hr
FORMULATION OUTPUT	0-5 gal/hr; 0-19 liters/hr; covers 32,000 cu ft or 900 cu meters/min
DROPLET SIZE	0.5 - 50 microns VMD
FLOW CONTROL	Metering valve
FUEL TANK SIZE	0.85-qt tank (0.8 liter) non-pressurized
FORMULATION TANK SIZE	1-gal tank (3.8 liters) pressure = 4 psi; 0.28 bar
FUEL CONSUMPTION	0.3 ga/hr (1.1 liters/hr)
POWER SUPPLY	Eight 1.5 V D-size alkaline batteries, a rechargeable 12V DC battery (optional), any 12V DC vehicle battery; connect to 12V receptacle with auxiliary battery cable
WEIGHT	Empty: 27 lbs (12.5 kg) Full: 37 lbs (16.8 kg)
DIMENSIONS	H 18.2 in / W 10 in / L 29 in
SHIPPING DATA	H 21 in / W 14 in / L 31 in

OPTIONAL

- Portable / rechargeable high energy 12 Volt DC battery (charger included)



TRAILBLAZER

ITEM #	DESCRIPTION	MODEL #	ORDER #
1	TrailBlazer	-	43200
2	TrailBlazer - Export only	-	43200-20

DUSTERS

ACCURATE APPLICATION IN ANY SPACE.

Our versatile line of dusters features products for all dust applications from fleas in rodent burrows to tick harborage areas to wasp nests.

DUSTERS

LONG REACH GRANULAR DUST-R

If you're servicing areas with burrows for fleas and ticks or treating bees and wasps' nests, you'll want the Long Reach Granular Dust-R around. This duster features a large holding tank and several extensions to help reach high nests and other hard to treat areas without wasting time on refilling. It's perfect for commercial and residential properties, including spaces like attics, crawl spaces, ceilings and wall voids.

FEATURES

- Chamber holds 2 quarts of dust
- Ideal for treating attics and crawl spaces
- Great for treating wasp nests
- 3-14 inch extensions
- Extension adds a static charge to the dust
- Unit measures over 10 feet long with all connections



LONG REACH GRANULAR DUST-R

ITEM #	DESCRIPTION	MODEL #	ORDER #
1	Long Reach Granular Dust-R	1153-G	24050000

RODENT CONTROL

OUTSMART RODENTS WITH DISCRETION AND SIMPLICITY.

B&G rodent control stations do all the work for you. Use non-fatal bait to monitor activity or a combination of bait and snap-trap for final control.



RODENT CONTROL

FAST-CATCH

RODENT CONTROL DOWN TO A "T."

Expertly designed to lure, capture and hide rodents from sight, the Fast Catch Rodent Station is a highly effective, multi-purpose solution for professional rodent control. The station can fulfill a number of functions: bait station, snap trap, bait and snap, or monitoring with non-toxic baits. A pop-up alert system allows for efficient monitoring of several stations for rodent activity.

FEATURES

- Heavy-duty construction
- Easy open single lock design
- Reusable – designed for years of service
- Tamper resistant – lid recesses into base
- Low-profile design for increased rodent activity
- Fits all professional rat snap traps and includes bait rods
- Pop-outs in rear of station allows for attachment

PLACES TO USE

- Sensitive Accounts – where rodenticide is banned
- Residential Accounts – keeps rats hidden from occupants
- Commercial kitchens, restaurants and office complexes



RODENT CONTROL

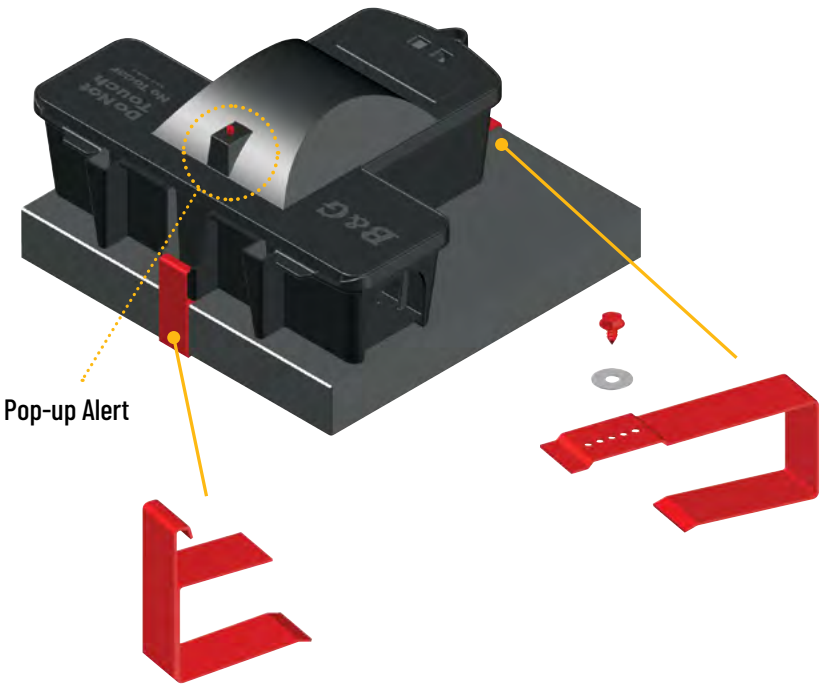
RODENT STATION ATTACHMENT SYSTEM

FEATURES

- The station attachment system consists of 2 clamps, a metal screw and washer. It is designed for use with a 12 inch x 12 inch (1.5 inch thick) concrete paver, and only with B&G rodent stations
- Easy and economical way to secure the Fast Catch and rodent bait station
- Holds station securely to block and is reusable

SPECIFICATIONS

- Attaches any B&G rodent station to a 12 inch x 12 inch paver block
- Installs in less than 30 seconds
- Heavy duty metal construction



ITEM #	DESCRIPTION	MODEL #	ORDER #
1	Fast Catch - Black 6 Pack	-	25000308
2	Fast Catch - Black Pallet (120 Stations)	-	25000320
3	Fast Catch - Black Alert - 6 Pack	-	25000309
4	Fast Catch - Black Alert - Pallet (120 Stations)	-	25000321
5	Fast Catch - Black 6 Pack with Attachment	-	35000308
6	Fast Catch - Black Pallet with Attachment	-	35000320
7	Fast Catch Alert - 6 Pack with Attachment	-	35000309
8	Fast Catch Alert - Pallet with Attachment	-	35000321
9	Attachment System Kit	-	25000260-C

RODENT CONTROL

STANDARD RODENT STATION

A low-profile design, large capacity bait chamber and heavy-duty construction make the B&G Rodent Bait Station a terrific alternative to other higher priced rodent stations. Its single-lock design decreases service time for quick and easy station cleaning. Rotating hinge design provides years of dependable service, making the B&G Rodent Bait Station the ideal choice for rodent control professionals.

FEATURES

- Thick-walled plastic can withstand being stepped on without damage
- Available with or without a heavy-duty paver



STANDARD RODENT STATION

ITEM #	DESCRIPTION	MODEL #	ORDER #
1	Rodent Station - Black 6 Pack	-	25000210
2	Rodent Station - Black Pallet (192 Stations)	-	25000215
3	Rodent Station - Gray 6 Pack	-	25000220
4	Rodent Station - Gray Pallet (192 Stations)	-	25000225
5	Rodent Station with Weight	-	25000112

RODENT CONTROL

DELUXE RODENT STATION

Perfect for controlling rat and mice populations in residential or commercial spaces, the Deluxe Rodent Station delivers high functionality at an economical price point. Featuring a domed area to accommodate snap traps and a sizable bait chamber, the station can be configured for a variety of pest control strategies utilizing baits, traps or a combination of both. The Deluxe Rodent Station’s tamper-resistant design features a low-key profile for increased rodent activity.

DELUXE RODENT STATION

ITEM #	DESCRIPTION	MODEL #	ORDER #
1	Deluxe Bait Station	-	25000420
2	Deluxe Bait Station with Weight	-	25000402
3	Extra Key Pack - 15 Keys	-	25000205

MOUSE STATION

The B&G Mouse Bait Station features a high-capacity bait chamber, single-lock design for easy servicing and low-key profile for increased rodent activity. The station is equipped with a recessed cover which prevents tampering and can be secured further with a zip or lock tie via the hole in the cover. The B&G Mouse Bait Station can be positioned horizontally or vertically.

MOUSE STATION

ITEM #	DESCRIPTION	MODEL #	ORDER #
1	Mouse Station	-	35000215

FEATURES

- Holds up to 2 snap traps
- Ramp entrance prevents water from contaminating the bait
- Available with or without a heavy-duty paver



* Pictured with paver

FEATURES

- Large bait chamber allows multiple mice to feed at once
- Heavy-duty construction prevents damage even when stepped on directly
- Rounded corners inside of station expedite cleaning



RODENT CONTROL

SX ONE RAT BOX

The attractive SX One Rat Box can easily accommodate many different types of baits as well as most snap traps, allowing for a versatile approach to pest population control in commercial and residential areas. Its stylish, water-resistant design protects whatever bait or trap you choose to place inside. This unique rat bait station is equipped with a side opening, allowing it to be fixed to the wall, even during servicing.

FEATURES

- Keeps all poison baits safe from non-target species
- Takes loose bait, bait blocks, bait bags or snap trap
- Lockable and secure
- Packed 10 per case
- 3 keys included



SX ONE RAT BOX

ITEM #	DESCRIPTION	MODEL #	ORDER #
1	Sx One Rat Box	SXONE	-

RODENT CONTROL

ECO GUARD

The Eco Guard rodent control station is a flexible solution for managing rodent populations on commercial or residential properties. Its design makes the unit ideal for situating in corners or against a wall, while the rugged, high-quality, polypropylene construction makes it ideal for use in the tougher environments. Eco Guard is equipped with a lock and key to prevent unauthorized access to the bait.

FEATURES

- Lock designed to prevent water and ice build up
- Packed 20 per case
- 3 keys included



ECO GUARD

ITEM #	DESCRIPTION	MODEL #	ORDER #
1	Eco Guard Bait Station	SXECO	-

Contact us to learn more:

800-544-8811
us.pelsis.com
135 Region South Drive
Jackson, GA 30233

WE ARE  **pelsis**

A FAMILY OF BRANDS WITH ONE SHARED PURPOSE

B&G

CURTIS DYNA-FOG[®] _{Ltd.}

SYNERGETIC[®]

 **EDIALUX**
PROFESSIONAL PRODUCTS

NETWORK

P+L Systems[®]
Washroom

SILVANDERSSON 


AGRISENSE